

FAST FACTS 2023

Swire is a highly diversified global business group which has been in operation for over 200 years. It employs over 100,000 people across the world. Whilst Swire operates globally, its main sphere of operations is in Asia and to a lesser, but nevertheless significant, extent in North America and Europe. Swire's wholly owned shipping businesses trade worldwide, but the major sphere of their activity is in the Pacific and Australasia.

ABOUT JOHN SWIRE & SONS LTD

- Established in 1816 and headquartered in London.
- Responsible for formulating and directing overall group strategy. Provides a range of services within the group, including recruitment, employment and training of staff.
- Holds controlling stakes in a range of businesses trading in the UK, USA, Europe and Papua New Guinea, as well as in the Group's deep sea shipping businesses which are headquartered in Singapore.
- Holds a 60% stake in Swire Pacific Ltd.
- For more information, please refer to <https://www.swire.com>

ABOUT SWIRE PACIFIC LTD

- Listed on The Stock Exchange of Hong Kong Limited.
- Holding company for the Swire Group's principal businesses in the Hong Kong SAR, the Chinese Mainland and elsewhere.
- Major shareholder in Hong Kong listed companies Swire Properties (82%) and Cathay Pacific (45%).
- For more information, please refer to <https://www.swirepacific.com>

PROPERTY

Swire has substantial property interests in the Hong Kong SAR, the Chinese Mainland, the USA, Southeast Asia and Papua New Guinea. These include property development, investment, management, and trading interests, as well as hotels. The principal businesses are grouped under Swire Properties Ltd and Steamships Trading Company Ltd.



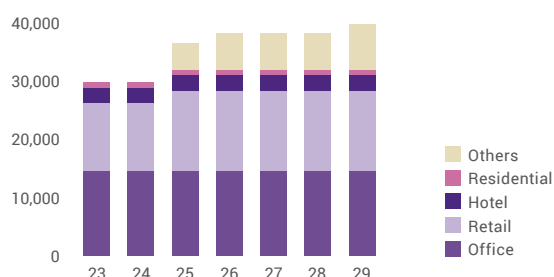
SWIRE PROPERTIES



Listed on The Stock Exchange of Hong Kong Limited, Swire Properties has investments in the Hong Kong SAR, the Chinese Mainland, the USA, Indonesia, Vietnam and Thailand, with a well-established record of developing and managing large-scale mixed-use projects that transform urban areas.

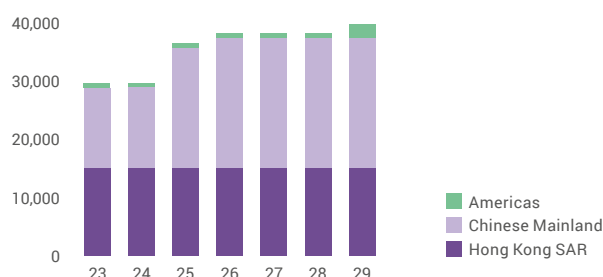
Completed property investment portfolio by type

Gross floor area ('000 sq.ft.)



Completed property investment portfolio by region

Gross floor area ('000 sq.ft.)



HONG KONG SAR



TAIKOO PLACE

Taikoo Place is one of Hong Kong's leading business hubs, comprising a network of interconnected Grade-A office towers. The latest additions include One Taikoo Place, completed in 2018, and Two Taikoo Place, completed in September 2022. Alongside the construction of a 70,000 sq ft open green space, these developments will transform Taikoo Place into a global business district.



PACIFIC PLACE

Pacific Place is one of Hong Kong's most desired business addresses and shopping and dining destinations.

The development comprises four five-star hotels and luxury serviced apartments, four Grade-A office towers and a shopping mall. The latest addition includes Six Pacific Place, which is expected to complete by the end of 2023.



CITYPLAZA

Cityplaza is the largest shopping mall on Hong Kong Island, spanning a total floor area of approximately 1.1 million sq ft. Directly connected to MTR Taikoo Station, the six-level mall houses more than 170 shops and restaurants, a lifestyle cinema, as well as an indoor ice rink with a wide range of amenities.



CITYGATE

The Citygate development in Tung Chung houses a shopping mall, together with a Grade-A office tower and two hotels. As Hong Kong's leading outlet mall, Citygate Outlets is home to the largest number of designer labels in the city, featuring around 150 international brands.

CHINESE MAINLAND



6 completed commercial projects



TAIKOO LI SANLITUN, BEIJING

Taikoo Li Sanlitun, in the heart of Beijing's Chaoyang District, is a low-density, open-lane complex comprising retail space and a luxury hotel, The Opposite House.



TAIKOO HUI, GUANGZHOU

Situated in Guangzhou's Tianhe central business district, the development comprises a shopping mall, two Grade-A office towers and the Mandarin Oriental Guangzhou hotel and serviced apartments.



INDIGO, BEIJING

Located in Beijing's Chaoyang District, INDIGO comprises a shopping mall, a Grade-A office tower and EAST Beijing, a lifestyle hotel.



TAIKOO LI CHENGDU

Wrapped around the historically important Daci Temple in Chengdu, the complex comprises an open-plan, lane-driven shopping mall and The Temple House, a luxury hotel with serviced apartments.



HKRI TAIKOO HUI, SHANGHAI

Located in Shanghai's Jing'an District, HKRI Taikoo Hui comprises a shopping mall, two Grade-A office towers, and two hotels, including The Middle House, a luxury hotel with serviced apartments.



TAIKOO LI QIANTAN, SHANGHAI

Located in Shanghai's Qiantan International Business District, Taikoo Li Qiantan is a retail development which focuses on wellness and sustainability.

USA



BRICKELL CITY CENTRE

The project includes a retail centre, two residential towers, two office buildings, and EAST Miami hotel and serviced apartments, managed by Swire Hotels. The second phase of the Brickell City Centre, namely One Brickell City Centre, has commenced.

SWIRE HOTELS

Swire Properties' wholly owned subsidiary Swire Hotels comprises two brands: The House Collective and EAST.



4 luxury hotels
under THE HOUSE COLLECTIVE



The Middle House, Shanghai



3 lifestyle hotels
under EAST

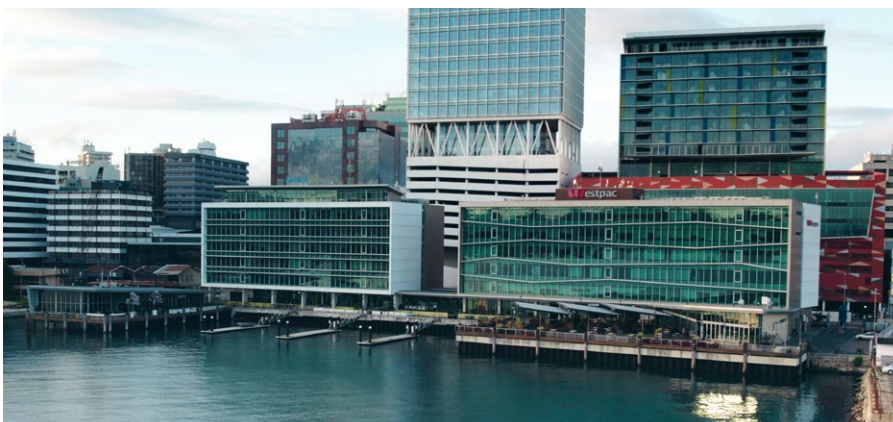


EAST Hong Kong

STEAMSHIPS TRADING COMPANY

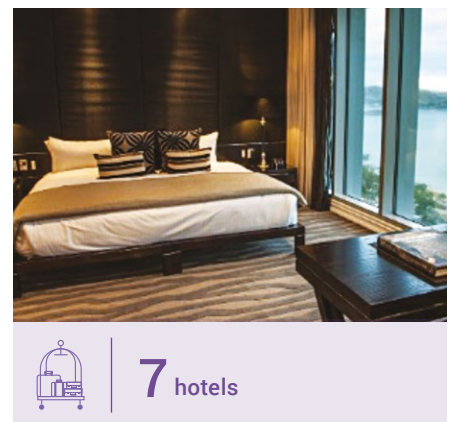


Steamships Trading Company is one of Papua New Guinea's best-known conglomerates with diverse commercial interests. Listed on the Australian and Port Moresby Stock Exchanges.



PACIFIC PALMS PROPERTY

One of the leading property developers in Papua New Guinea, with a nationwide portfolio of residential, commercial, retail, and industrial property.



7 hotels

CORAL SEA HOTELS

Papua New Guinea's leading hotel group.

BEVERAGES & FOOD CHAIN

Swire plays an important role in numerous links in the food chain. The group is one of the largest Coca-Cola bottlers in the world, a leading international supplier of tea, coffee, and botanical extracts for the global beverage industry, and is one of the largest operators of cold storage facilities in the USA. Swire is also involved in the manufacturing and distribution of a variety of food and beverage products.



BEVERAGES

SWIRE COCA-COLA

A strategic partner of The Coca-Cola Company since the 1960s.

Swire Coca-Cola has the exclusive right to manufacture, market and distribute products of The Coca-Cola Company in 11 provinces and the Shanghai Municipality in the Chinese Mainland, as well as the Hong Kong SAR, Taiwan region, Cambodia, Vietnam and an extensive area of the western USA.



Established in
1965



Annual sales volume
1,828
million unit cases*



Bottling plants
36



Franchise population
882 million



Beverage brands
58



Employees
36,611

*A unit case comprises 24 eight-ounce servings.

FRANCHISE TERRITORIES

Greater China



Franchise population
733.8 million

Operating areas	Number of bottling plant(s)
-----------------	-----------------------------

Anhui	1
Fujian	2
Guangdong	5
Guangxi	2
Hainan	1
Henan	2
Hong Kong	1
Hubei	2
Jiangsu	2
Jiangxi	1
Shanghai	2
Taiwan	1
Yunnan	1
Zhejiang	3

USA



Franchise population
30.9 million

Operating areas#	Number of bottling plant(s)
------------------	-----------------------------

Arizona	1
California	—
Colorado	1
Idaho	1
Kansas	—
Nebraska	—
Nevada	—
New Mexico	—
Oregon	1
South Dakota	—
Utah	1
Washington	1
Wyoming	—

Serving throughout parts of the 13 states listed above.

Southeast Asia



Franchise population
116.8 million

Operating areas	Number of bottling plant(s)
-----------------	-----------------------------

Cambodia	1
Vietnam	3

COLD STORAGE

UNITED STATES COLD STORAGE

North America's third largest Public Refrigerated Warehouse logistics provider.



38 facilities in
13 US states

INGREDIENTS

FINLAYS

A leading global supplier of tea, coffee, and botanical extracts, with extensive interests across extraction, trading, tea farms, R&D, packing and customer support.



3 billion
cups of tea and infusions
produced annually



49.51%
shareholding in Damin
Foodstuff (Zhangzhou),
the world's largest producer
of tea extracts

MANUFACTURING AND DISTRIBUTION

TAIKOO SUGAR

Packages and sells sugar and tea in the Hong Kong SAR and the Chinese Mainland.



CHONGQING NEW QINYUAN BAKERY

Leading bakery chain in southwest China.



Around **400** stores

AVIATION

Swire is a major player in the global aviation industry, with interests including airlines and aircraft engineering. The division comprises significant investments in the Cathay Group and Hong Kong Aircraft Engineering Company (HAECO) Group.



CATHAY GROUP

The Cathay Group includes Cathay Pacific, wholly owned low-cost carrier HK Express, and all-cargo airline Air Hong Kong, as well as a 16.26% associate interest in Air China.

The Group's other businesses include its catering, laundry, ground-handling and cargo terminal companies.



PREMIUM TRAVEL

Premium travel services are provided by Cathay Pacific, Hong Kong's home carrier and a founding member of the **oneworld** global alliance. Award-winning Cathay Pacific has played a key role in developing the Hong Kong international aviation hub – connecting the city to the world for over 76 years.



CARGO

Cathay Cargo operates a dedicated fleet of 20 freighter aircraft in addition to using cargo space on the Group's passenger fleet. The Cathay Cargo Terminal at Hong Kong International Airport provides comprehensive logistics solutions to the airfreight industry, with an annual handling capacity of 2.7 million tonnes.



LOW-COST TRAVEL

HK Express, Hong Kong's only low-cost carrier, offers scheduled passenger services within Asia, operated by its fleet of 27 narrow-body aircraft.



LIFESTYLE

Premium travel lifestyle brand "Cathay" provides members with a wide range of exciting offers and rewards in a host of complementary categories, including holidays, payment, wellness, shopping and dining.

HAECO GROUP

One of the world's leading aircraft engineering and maintenance service providers, offering a comprehensive range of airframe, component, and engine services.



2022 Top 10 customers (in alphabetical order)

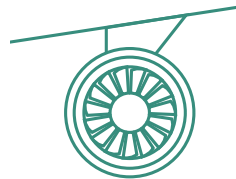


GROUP SERVICES



Airframe

Offers base maintenance, cabin reconfiguration, structural modification, and freighter conversion, as well as line maintenance, including transit checks and certification, ramp services, cabin management and 24/7 aircraft-on-ground support across Asia.



Engine

Operates world-class repair, overhaul and testing facilities and provides global, 24/7 on-wing and off-wing engine support for Rolls-Royce, GE Aviation and Pratt & Whitney aircraft engines.



Component

Provides inventory technical management, landing gear services, composite services, component repair and overhaul services for hydraulic, mechanical, avionics and pneumatic systems across the Airbus and Boeing aircraft families.

MARINE SERVICES

Swire's marine interests cover a range of activities, from multipurpose liner shipping to global bulk trading, logistics, and port and shipping agency services. The group's involvement in this industry dates back 150 years.



SWIRE SHIPPING

Founded in 1872, Swire Shipping operates an extensive network of services connecting more than 400 ports in the Asia-Pacific region and globally. Its multipurpose fleet provides high frequency liner services in the Asia-Pacific, transpacific services, specialist projects and heavy lift shipping solutions, while a full suite of integrated logistics services provide end-to-end supply chain management for customers.



49 owned and operated vessels

15 liner services

SWIRE BULK

Headquartered in Singapore, Swire Bulk is a leading geared cargo specialist in the dry bulk sector, supported by a modern and sustainable fleet of 125 owned and chartered-in Handysize and Supramax vessels operating across a global network.



125 owned and operated vessels

Average fleet age **5.6** years

STEAMSHIPS TRADING COMPANY

Steamships offers customer solutions to land, coastal and river shipping in Papua New Guinea, as well as liner services and project charters.



26 owned and operated vessels

6 liner services



TRADING & INDUSTRIAL

Swire's trading & industrial activities encompass a wide spectrum of business interests, ranging from apparel to automotive trading. The group has strategic investments in various sustainable businesses.



WHOLESALE AND RETAIL

SWIRE RESOURCES GROUP

Major distributor and retailer of sports and lifestyle shoes, apparel and accessories in the Hong Kong SAR, the Chinese Mainland, and Macau SAR.



Over **150** retail outlets

MARATHON
SPORTS 马拉松

CATALOG

GigaSports

arena

Cath Kidston
LONDON

CHEVIGNON
PARIS

Columbia

crocs

GO WILD

havaianas

JOCKEY

lepetto
PARIS

ROCKPORT

speedo

TeVa UGG

AUTOMOTIVE TRADING

TAIKOO MOTORS GROUP

Distributes and retails international brands of passenger cars, commercial vehicles, motorcycles, and scooters, principally in Taiwan.

 TAIKOO MOTORS


OFFSHORE SUPPORT SERVICES

SWIRE ENERGY SERVICES

Provides fully integrated supply services for the energy industry, including offshore container solutions, wind farm turbine maintenance services and specialist aviation services.

 SWIRE ENERGY SERVICES



64 bases across
30 countries

GREEN INVESTMENTS

ARGENT ENERGY

ARGENT ENERGY

Supplies waste-based transport biofuels manufactured from sustainable feedstocks in the UK and the Netherlands to fuel suppliers across Europe.



SWIRE WATER

 SWIRE WATER

Swire Water operates under two brands from its headquarters in Salt Lake City, USA.



PURESTREAM SERVICES

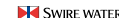
Provides integrated water treatment solutions to the energy industry.





WESTECH ENGINEERING

Headquartered in the USA, Westech Engineering provides process solutions for water and wastewater treatment, liquid/solids separation, and biological treatment needs in municipal, industrial and minerals markets worldwide.

HEALTHCARE

Swire is continually looking to expand into new areas of operation that complement its existing portfolio and provide opportunities for future growth. It is actively working to grow its healthcare services platform.



COLUMBIA

COLUMBIA CHINA HEALTHCARE

Swire has an associate investment in Columbia China Healthcare, a business that owns and operates private hospitals and senior housing in the Yangtze River Delta area.

SHENZHEN NEW FRONTIER UNITED FAMILY HOSPITAL AND HEAL MEDICAL GROUP



Swire has an associate investment in SHH Core Holding Limited, which owns Shenzhen New Frontier United Family Hospital, a premium private hospital operated by United Family Healthcare in Shenzhen, and HEAL Medical Group. HEAL Medical Group currently operates four clinics in Hong Kong – HEAL Oncology, HEAL Aesthetic, HEAL Medical (Multi-Specialist Centre) and HEAL IVF.



DELTAHEALTH

Swire has an associate investment in DeltaHealth, a Chinese Mainland healthcare provider specialising in cardiovascular care.



SWIRE GROUP OFFICES

JOHN SWIRE & SONS LIMITED

Swire House
59 Buckingham Gate
London SW1E 6AJ
United Kingdom
Telephone: (44) 20 7834 7717
Email: enquiries@jssldn.co.uk

JOHN SWIRE & SONS (H.K.) LIMITED

33/F, One Pacific Place
88 Queensway
Hong Kong SAR, China
(GPO Box 1, Hong Kong SAR)
Telephone: (852) 2840 8888
Facsimile: (852) 2526 9365
Email: publicaffairs@swire.com

JOHN SWIRE & SONS (CHINA) LIMITED

2/F, ONE INDIGO
20 Jiuxianqiao Road
Chaoyang District
Beijing 100016
China
Telephone: (86) 10 8486 3321
Facsimile: (86) 10 8486 3221

JOHN SWIRE & SONS (H.K.) LIMITED — THAILAND REPRESENTATIVE OFFICE

Unit 3302, 33/F
One City Centre
548 Phloen Chit Road
Lumphini Subdistrict
Pathum Wan District
Bangkok 10330, Thailand
Telephone: (66) 2 626 6911
Email: contact@jssthmm.com

JOHN SWIRE & SONS (H.K.) LIMITED — VIETNAM REPRESENTATIVE OFFICE

Suite 1407, Level 14
Saigon Centre Building
65 Le Loi Boulevard
Ho Chi Minh City
Vietnam
Telephone: (84) 28 3971 9386

SWIRE GROUP (TAIWAN REGION)

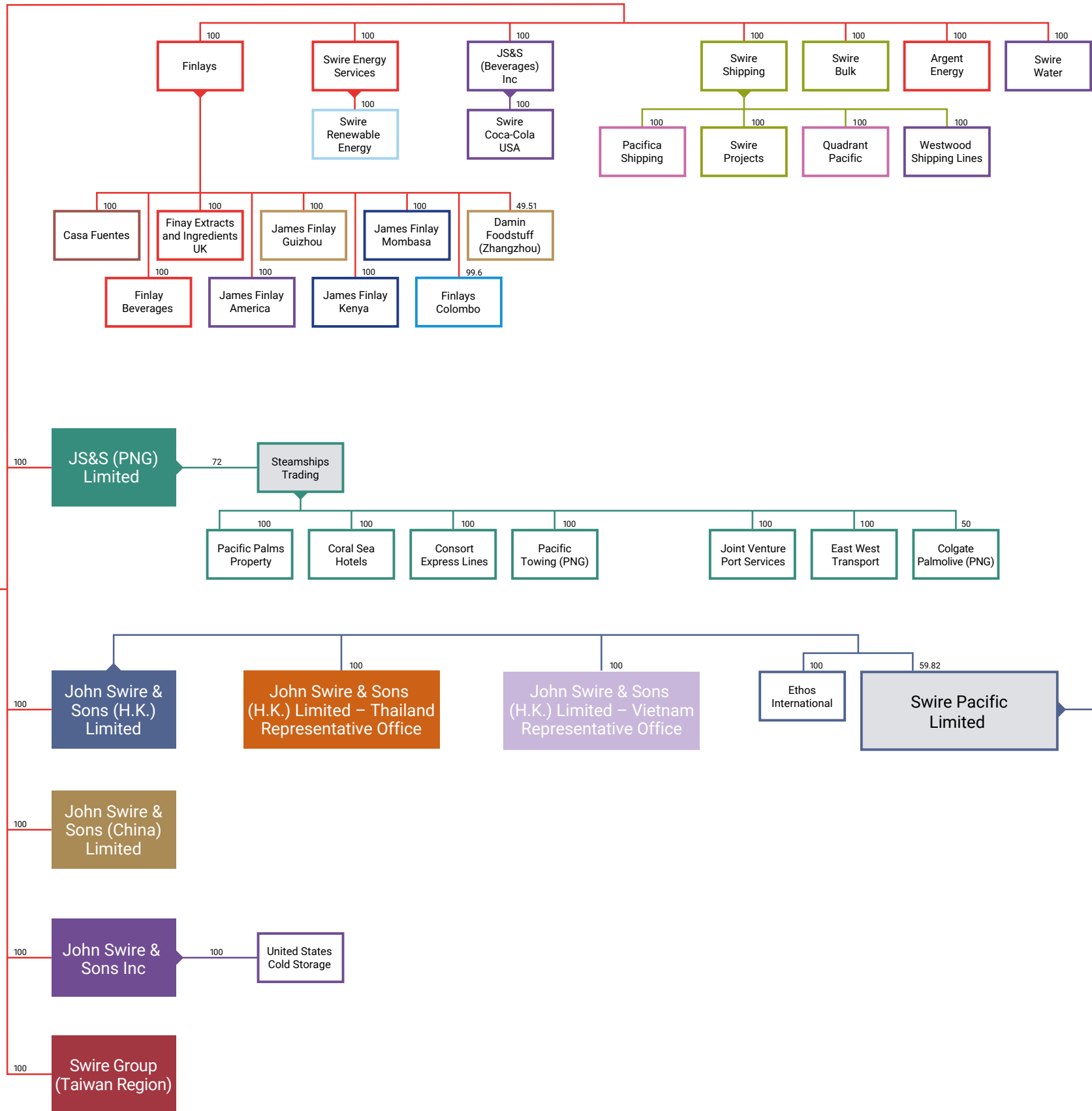
No. 287 Sec. 1 Jiuzong Road
Taipei 11494
Taiwan Region
Telephone: (886) 2 8178 5000
Facsimile: (886) 2 2791 2388

JOHN SWIRE & SONS INC

PO Box 140
Milford, DE 19963-0140
USA
Telephone: (1) 302 422 7536
Facsimile: (1) 302 422 8420

JS&S (PNG) LIMITED

c/o Steamships Trading Company Ltd.
@345 Building, Level 2
Stanley Esplanade
PO Box 1, Port Moresby
National Capital District 121
Papua New Guinea
Telephone: (675) 313 7400



Operating business by country/territory:

■ Argentina
 ■ Chinese Mainland
 ■ Kenya
 ■ Papua New Guinea
 ■ Sri Lanka
 ■ Taiwan region
 ■ UK
 ■ Vietnam

■ Cambodia
 ■ Denmark
 ■ Hong Kong SAR
 ■ New Zealand
 ■ Singapore
 ■ Thailand
 ■ USA
 ■ Publicly Quoted

*Shareholding held through subsidiary at 12.24%, another 11.75% held through an economic interest with total holding at 24.00%

