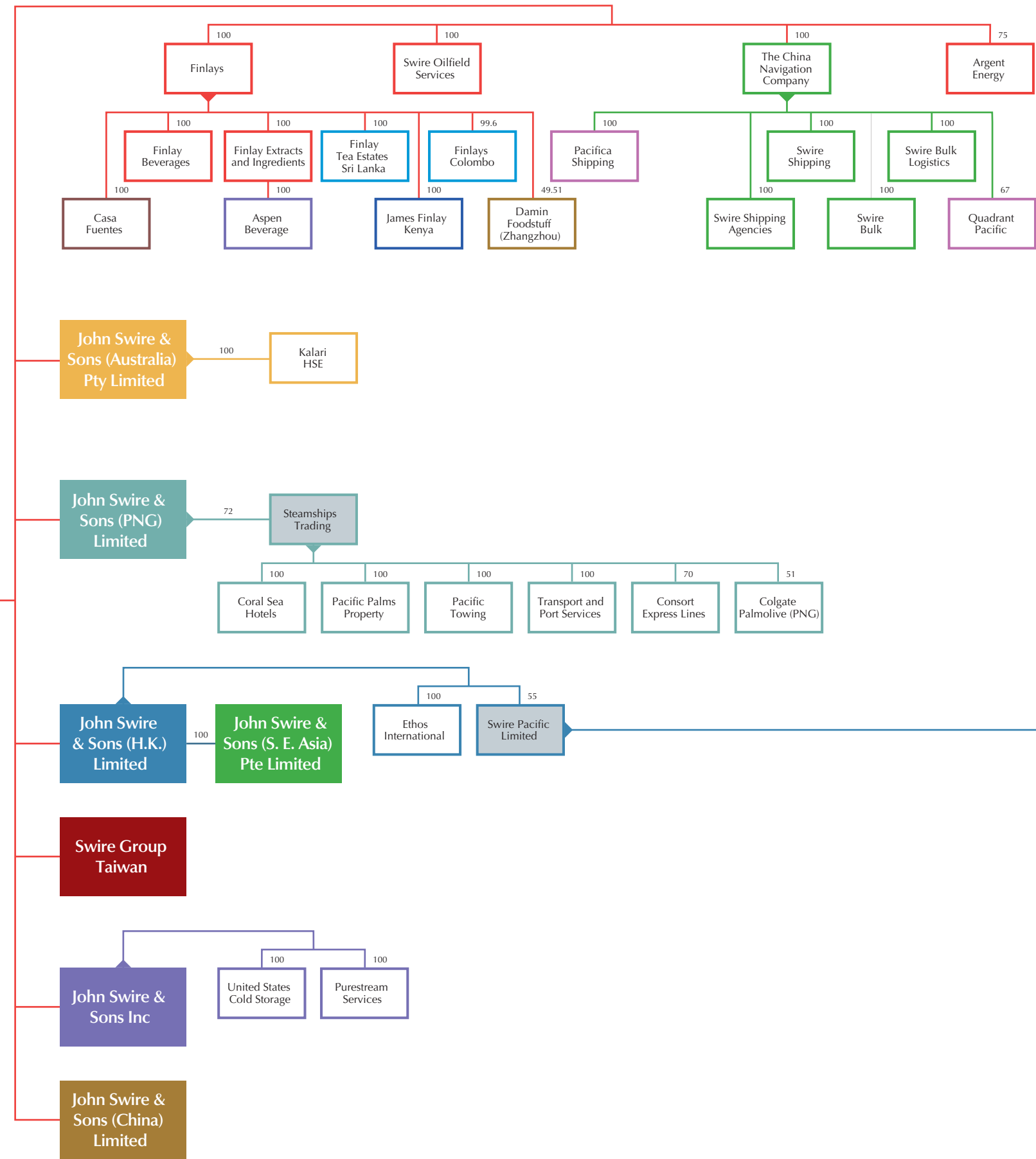


# JOHN SWIRE & SONS LIMITED



- Operating business by country/territory:
- Argentina
  - Australia
  - Canada
  - Denmark
  - Hong Kong SAR
  - Israel
  - Kenya
  - Mainland China
  - Malaysia
  - New Zealand
  - Norway
  - Papua New Guinea
  - Philippines
  - Sri Lanka
  - Singapore
  - Taiwan
  - The Netherlands
  - UK
  - USA
  - Publicly Quoted

This organisation chart is for illustrative purpose only and does not represent the legal structure of the group.  
 \* Shareholding held through subsidiary at 25%, another 24% held through an economic interest with total holding at 49%.

